

About Us



A background image of a city skyline, likely New York City, with the Empire State Building prominently visible on the left. The image is overlaid with a semi-transparent white and yellow gradient.

CONTENTS

Contents

- 01 Overview
- 02 Equipment
- 03 Process
- 04 Applications
- 05 Contact Us

PART 01
Overview

01

PREFACE

Overview

Founded: August, 2015

Registered Capital: CNY 20 Million

Employees: 120

Plant area: 6300m²

Service: Consulting, Antenna Design, Label Production

Priority: Dedicated to provide customers with cost-effective products

WHY US: Over 20 years+ RFID industry experience; Complete product portfolio; Fast delivery; Fast response

Production of more than 1 billion RFID labels

Leading RFID Inlay/Tag Manufacturer





QUALIFICATIONS



ISO9001: 2015

ISO45001: 2018

ISO14001: 2015

UnionPay Cert-NFC Payment Label

FSC System Cert

Group member of China Packaging Association

National High-tech Enterprises

RAINRFID Member

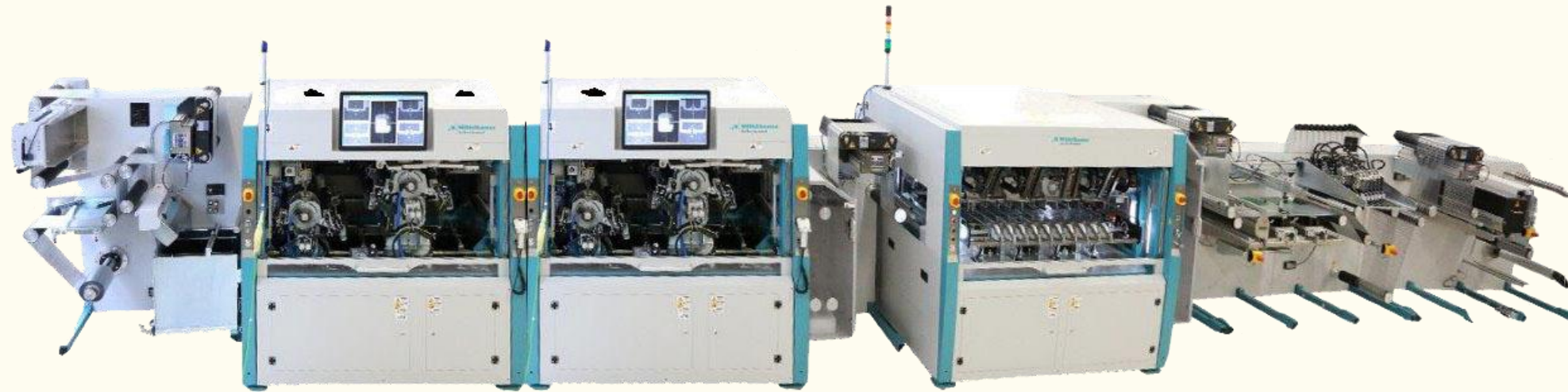


Integrity creates quality, innovation leads the future

PART 02
Equipment

A large, stylized number "02" in a gold color, centered within a dark grey hexagonal shape that has a gold border. The hexagon is positioned on the right side of the slide.

Equipment (1) **Bonding--Mühlbauer DDA 40000 WF**



2 Sets; UPH: 45000 PCS/Set

Equipment (2) Bonding--Mühlbauer DDA 40000



2 Sets; UPH: 24000 PCS/Set

Equipment (3) **RFID Label Automatic Lamination Machine**

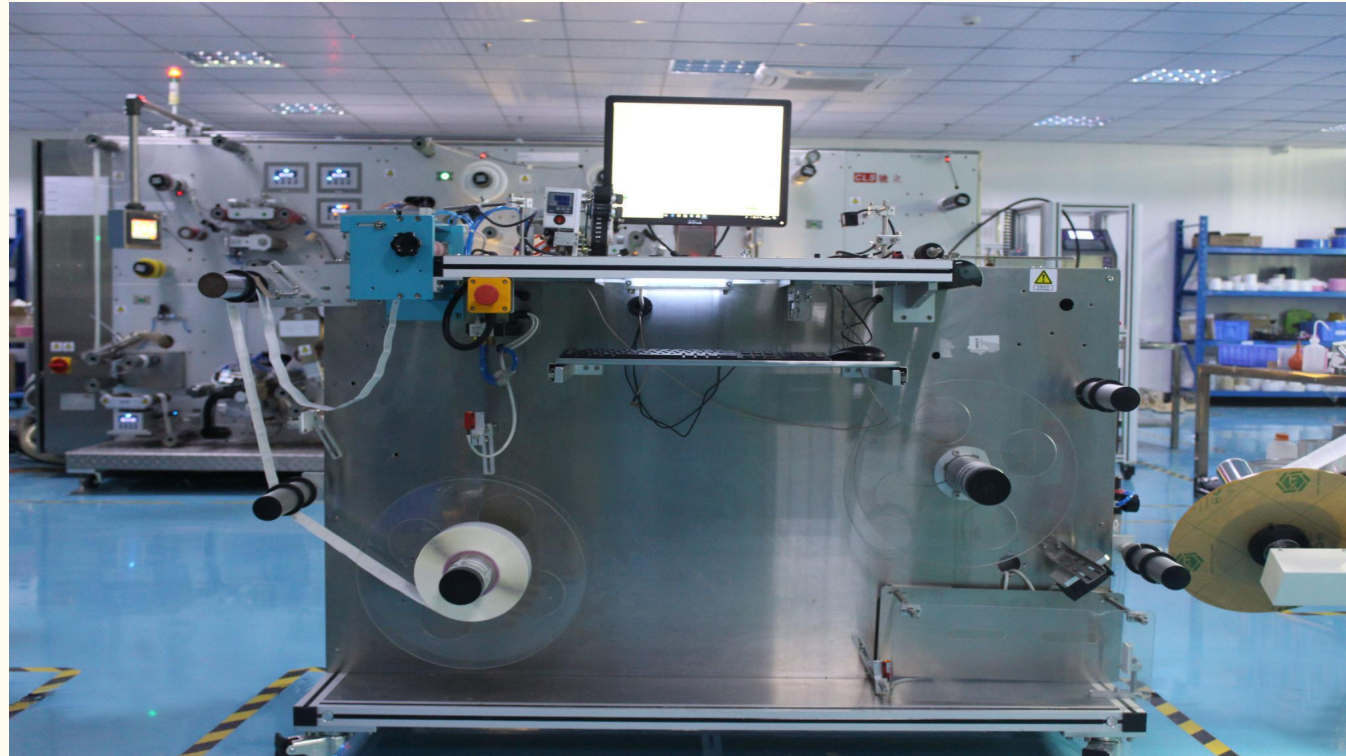


Strength:

1. Multi-layer labels converting;
2. Label Max. Width: 350mm;
3. Ready to buy machines if projects require;

Production Speed: Max.60M/Min Capacity: 700,000 PCS/Set/Day

Equipment (4) RFID Label Encode and detection machine



Detecting Speed Max.: 15000~20000pc/H/Set

Equipment (5) **RFID Printer**

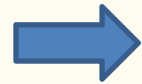


Description: Printing and encoding at the same time

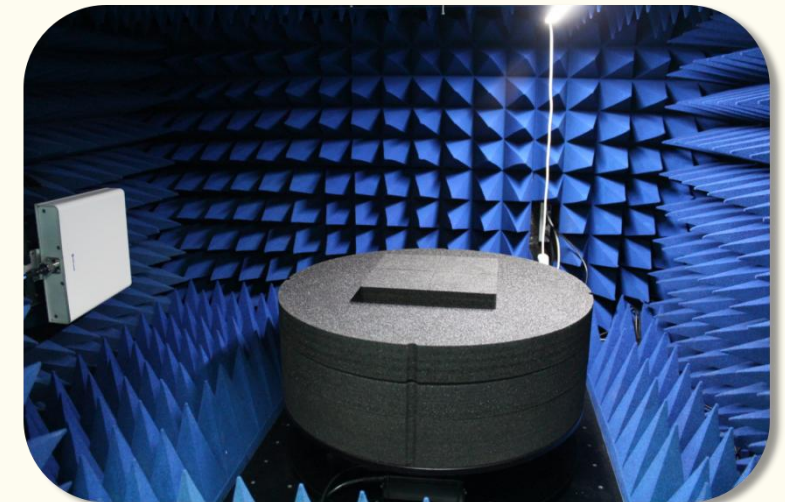
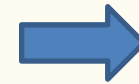
Equipment (6) LAB Equipment



Laser Engraving Equipment
(Antenna sample making)



Manually Bonding Equipment
(Flip-chip)



Anechoic Chamber
(an environment to accurately
measure performance of RFID inlays)

Equipment (7) LAB Equipment



Constant Temperature & Humidity Machine



Shear Test



Finland Voyantic Tagsurance RFID Measurement System

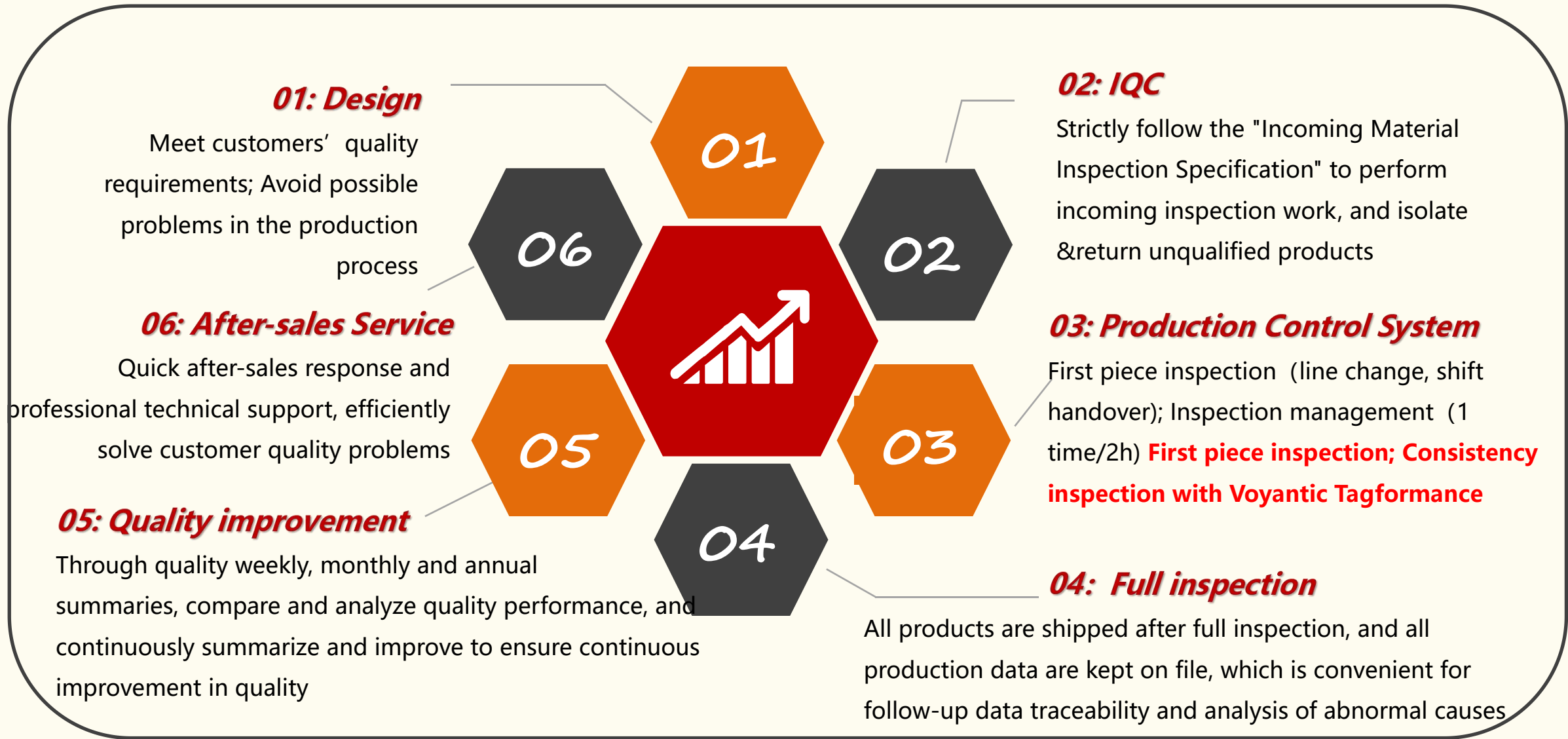


Bending Resistance Test

PART 03
Process

A large, stylized number "03" rendered in a gold, outlined font. The "0" is a simple rectangle with rounded corners, and the "3" is composed of two curved segments. This number is centered within a dark grey, arrow-shaped graphic that points to the left.

Process Quality Control



Process Product Developing Process

01: Requirement from Customers

Before product development, collect customer requirements, including applications, chip required, label material, size requirements, customization and other information

03: Sample Testing

Anechoic chamber simulation test, carry out simulation test according to customer needs, whether the sample is suitable for customers' real-world application.



01

02

03

04

02: Sample Making

Design antennas and provide label solutions according to customer needs, then make samples

04: Samples confirmed

Sample testing is OK and the sample is sent to the customer, and the customer confirms it with signature

General product development finished within 1 week

Process Product Production Process

01: IQC

Sampling inspection of each batch of incoming materials according to the "Incoming Material Inspection Specification", and form a record file

02: Bonding

Flip-chip through ACP conductive adhesive

03: Converting & Die cutting

Facestock+Double-sided adhesive+Dry inlay Converting&Die cutting

01

02

03

04

05

06

04: Full inspection

All products must be functionally tested, and the test data must be recorded

05: Packing

Pack the products according to the product packaging specification

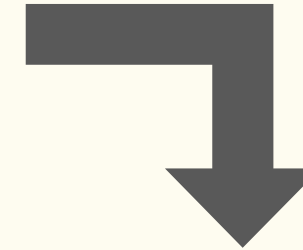
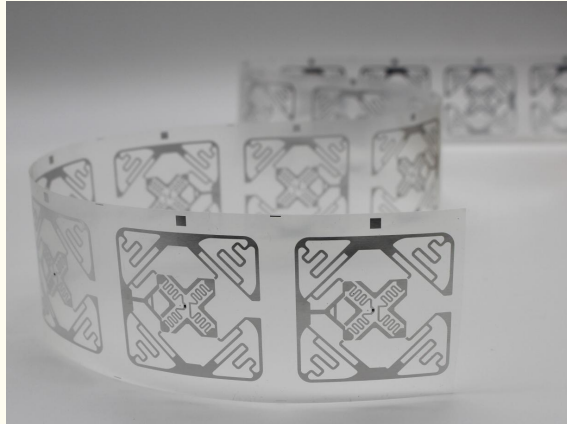
06: Sampling inspection&warehousing

Warehousing after passing the quality sampling inspection

PART 04
Applications

04

Products & Applications(1)

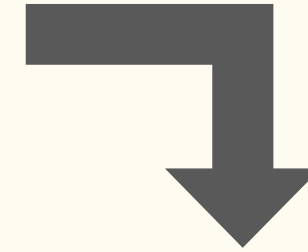
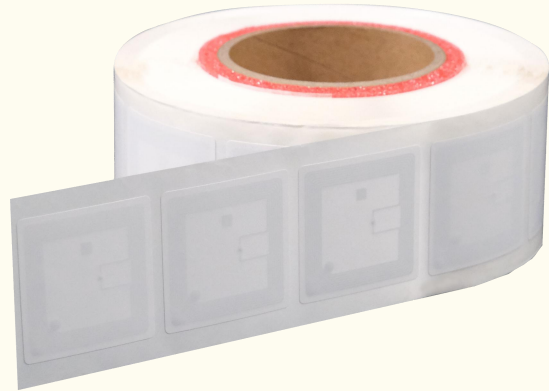


Dry/Wet Inlay Processing

◆ For secondary processing



Products & Applications(2)

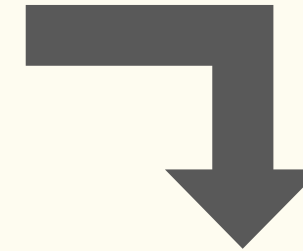


Library Tag

- ◆ Simplify the book borrowing and returning process
- ◆ Zero distance, unlimited service to readers
- ◆ Achieve the visible management of books



Products & Applications(3)

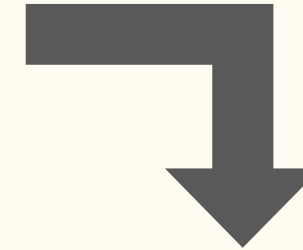


Scenic spot ticket/Event Ticket

- ◆ Digital management
- ◆ Anti-counterfeiting; Eliminate forgery & fraud
- ◆ Smart guide for crowd flow monitoring



Products & Applications(4)

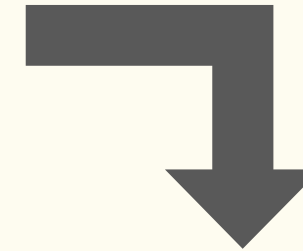
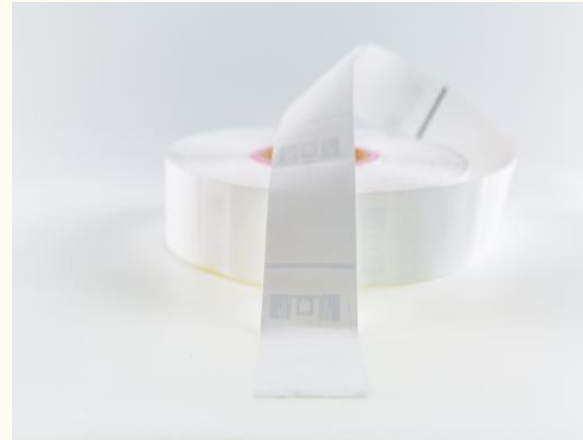


Hang Tag(bags/shoes/hats)

- ◆ Inventory&delivery accuracy
- ◆ Anti-counterfeiting & anti-channeling goods
- ◆ Membership management; Interactive communications; Automated self checkout



Products & Applications(5)

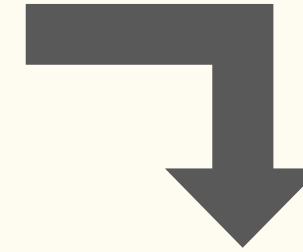
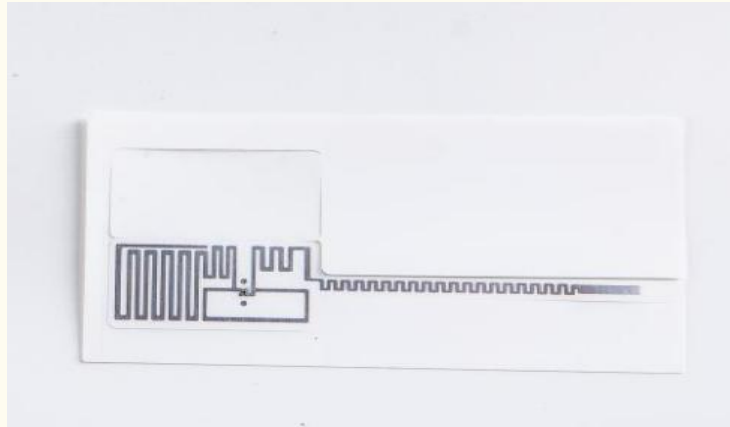


Woven Tag (Apparel/Home textiles/Warehouse stores)

- ◆ Smart one-stop production, warehousing, inventory & delivery
- ◆ Anti-counterfeiting
- ◆ Optimize supply chain management



Products & Applications(6)

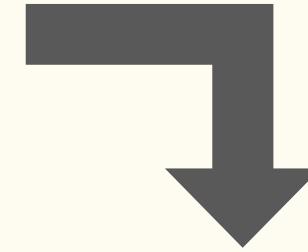


Jewelry Tag (jewelry/watch/glasses)

- ◆ Fast delivery&receiving&labeling
- ◆ Improve refined product management & customer experience
- ◆ Improve logistics efficiency
Reduce financial pressure



Products & Applications(7)

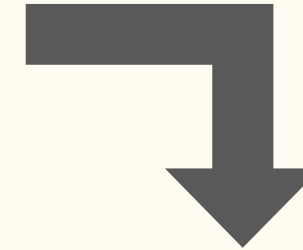


Baggage Tags (Tracing management of airlines baggage)

- ◆ Resistant to harsh environments & durable
- ◆ Contactless reading & Batch reading
- ◆ Improve baggage identification rate and sorting accuracy



Products & Applications(8)

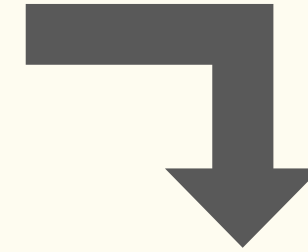
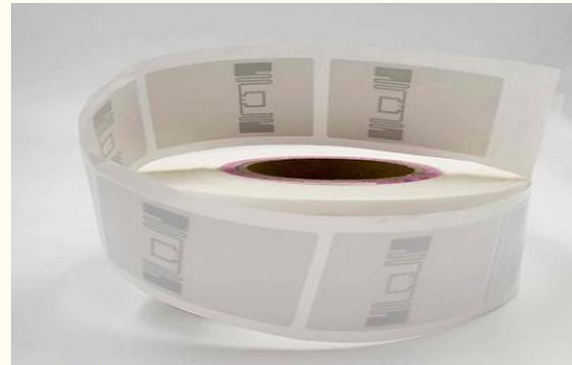


On-Metal Tag (Smart phone NFC / Asset management)

- ◆ High temperature resistance; Impact resistance; Vibration resistance
- ◆ Stable performance under high temperature
- ◆ Very strong resistance to chemicals



Products & Applications(9)

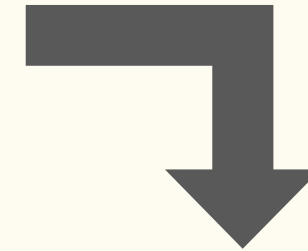
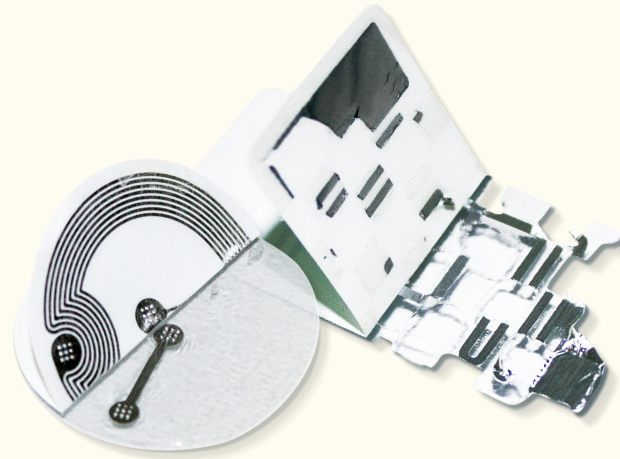


Retail Tag(No staff retail store)

- ◆Rapid scan & large data capacity
- ◆Penetration barrier free reading
- ◆Small size & various shapes



Products & Applications(10)

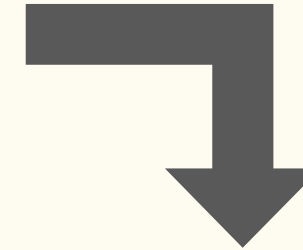


Tamper-evident Tag (Wine/Cosmetics/Drugs)

- ◆ Anti-counterfeiting & traceability and prevent heat transfer
- ◆ Stable performance under harsh environments
- ◆ Bend resistant; Not easy to damage; Longer storage time

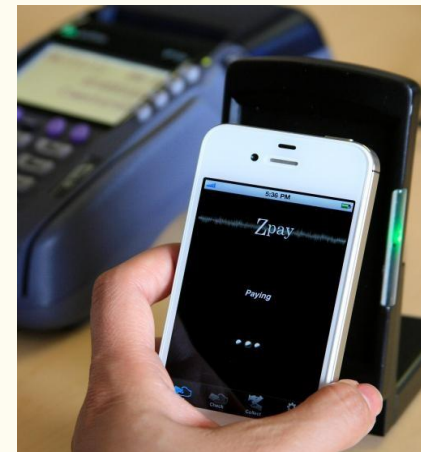


Products & Applications(11)

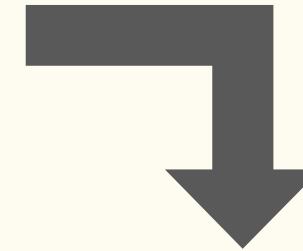


UnionPay Tag (smart phone NFC payment)

- ◆ Convenient & Fast
- ◆ Safe & Reliable
- ◆ Personalized consume experience

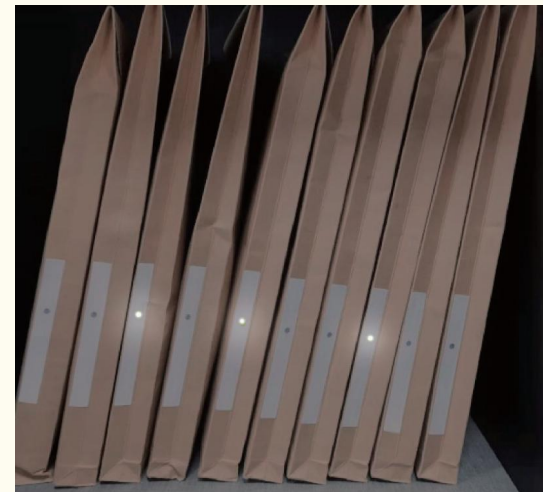


Products & Applications(12)



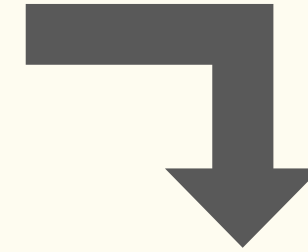
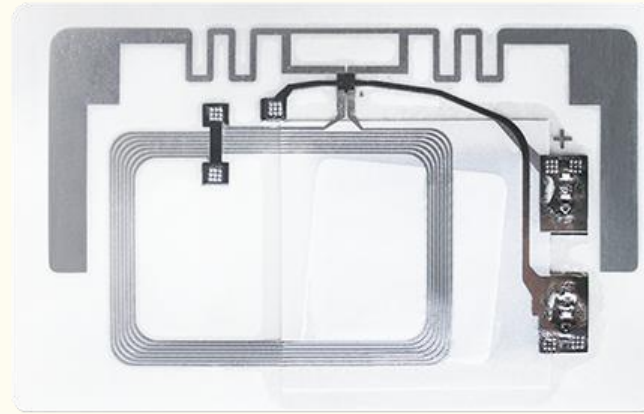
UHF LED Tag

- ◆ Light up to find the objects
- ◆ Fast locating
- ◆ Achieve visible management



Integrity creates quality,
innovation leads the future

Products & Applications(13)



Temperature Sensor Tag

- ◆ Timed temperature measurement
- ◆ Store data offline
- ◆ Whole process temperature monitoring



PART 05

Contact Us

A large, stylized number "05" in a gold, outlined font, positioned inside a dark grey hexagonal shape with a gold border.

物联网时代

智慧企业管理 “一站式” 解决方案

Win Win Together

Contact Us

<https://www.osrfidglobal.com/contact/>



Follow Us !

Factory

Headquarter: 301, Building 2, No.32, Fumin Road, Zhenxingwei, Tangxia Town, Dongguan City, Guangdong Province, China 523710.

Tel: 0769-81283410

Email: VINCENT@OSRFID.COM

Shenzhen Branch Office

Branch Office: Galaxy world B1006, Yabao Road No.1, Bantian Street, Longgang District, Shenzhen City, Guangdong Province, China 518129.

Tel: 0755-84879480

Email: INQUIRY@OSRFID.COM

THANKS
Thanks